



**GEARHEADS(ULTRA POWERFUL TYPE)** Frame size 90mm sq. (3.54 in. sq.)

BALL BEARING TYPE

**RATED TORQUE OF GEARHEAD**

MODEL	Speed(rpm)	500	300	200	120	100	60	50	30	20	15	10	9	6	5	3	2	1
	Ratio	50Hz	3	5	7.5	12.5	15	25	30	50	75	100	150	166.7	250	300	500	750
60Hz		3.6	6	9	15	18	30	36	60	90	120	180	200	300	360	600	900	1800
L9UK□B L9V10D(DECIMAL)	kg-cm	32.8	54.7	82	123.2	147.8	222.8	267.3	300	300	300	300	300	300	300	300	300	300
	N-m	3.21	5.36	8.04	12.07	14.49	21.83	26.20	29.40	29.40	29.40	29.40	29.40	29.40	29.40	29.40	29.40	29.40
	oz-in	456	759	1139	1711	2053	3093	3712	4166	4166	4166	4166	4166	4166	4166	4166	4166	4166

With Decimal Gearhead

- \* The normal torque is that the motor and gearhead are directly coupled.
- \* Insert the denominator of reduction ratio in □ of gearhead model name.
- \* Actual rotation speed is 2~15% less than synchronous speed.
- \* ■Color indicates that the rotation of gearhead shaft is in opposite direction as output shaft of motor.

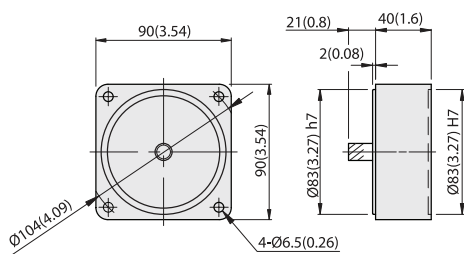
TERMINAL BOX TYPE  
INDUCTION MOTORS

**DIMENSIONS**

Unit : mm(inch)

**DECIMAL GEARHEAD**

**L9V10D**

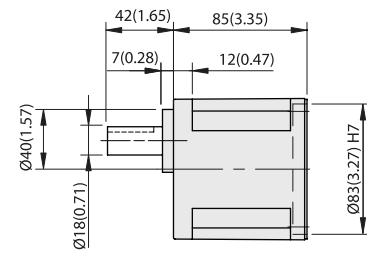
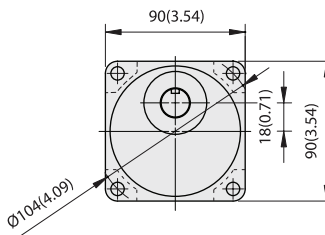


WEIGHT 0.6kg (1.3 lb)



**GEARHEAD**

**L9UK□B**



MODEL	GEAR RATIO	WEIGHT		BOLT
		kg	lb	
L9UK□B	1/3~1/200	1.95	4.3	M6xL20

